

## SHANDONG XINGHUA CASTING CO., LTD

Is a foundry enterprise with more than 20 years experience in casting.  
山东兴华铸件有限公司是一家拥有 20 多年铸造经验的铸造企业



With more than 20 years' casting experience, Shandong Xinghua Casting Co., Ltd.( hereinafter referred to as "Xinghua") located in Weifang, Shandong Province, China, which is nearby seaport of Qingdao and Tianjin. Xinghua focus on different kinds of casting parts, like ductile iron manhole covers, cast iron grates, cast iron pipes and fittings.

In 2018, Xinghua update the equipment to meet with the standard of enterprise and the emission limit of green casting. Now Xinghua is a "green foundry enterprise" with annual capacity 120,000 tons, building area 33, 000m<sup>2</sup>, 3 casting lines (one vertical line/ one horizontal line/ one dipping line), more than 90 employees (including 3 technical engineers, 5 inspectors).

Xinghua now has complete product development process from product design to mold design & manufacture, sample produce, small batch verify and mass production. Meanwhile, we have production process and quality guarantee system, which covers raw material/ assembly parts purchasing, iron smelt, casting sand core produce, casting, machining, cleaning, storage, transport and after sales. In order to improve the quality of the products, Xinghua passed the quality system certification in 2000, and get ISO9001:2015 quality management system certification in 2017. After years of hard work, Xinghua won widespread trust and praise in China, and the products exported to over 20 countries, including Germany, Canada, the United States, Italy, Spain, Portugal, the United Kingdom, Chile, Poland, Morocco, Serbia, Lebanon, Sri Lanka, Nigeria, and so on.

山东兴华铸件有限公司（后文简称“兴华”）是一家拥有 20 多年铸造经验的铸造企业。兴华位于中国山东省潍坊市，靠近首都北京、青岛港和天津港。自成立以来，我们一直专注于各类铸铁零件的生产，如球墨铸铁井盖、铸铁格栅、铸铁管道及配件等。

2018 年，兴华进行了一次改革，使得工厂内各项指标达到了企业标准和绿色铸造的排放限值，成为一家绿色制造企业。兴华占地面积 3.3 万平方米，拥有一纵一横一倾三条生产线，拥有员工 90 余人（其中技术人员 3 人、实验人员 3 人、检验人员 5 人），年生产能力达到 12 万吨。

兴华不但拥有完整的产品开发流程，包括产品研发、模具的设计和制作、样品生产、小批试制和批量生产，同时还拥有完整的生产流程和质量保证体系，涵盖原材料 / 配件采购、生铁冶炼、砂芯造型、铸造成型、产品加工、清洗、出入库、仓储、运输和售后等。为保证产品的质量，兴华于 2000 年通过了质量体系认证，并于 2017 年通过了最新版本的 ISO9001:2015 质量管理体系认证。经过多年的努力，兴华赢得了国内多个地区和行业的广泛信任和赞誉，产品远销到 20 多个国家，如：德国、加拿大、美国、意大利、西班牙、葡萄牙、英国、智利、波兰、摩洛哥、塞尔维亚、黎巴嫩、斯里兰卡、尼日利亚等。

公司秉承诚信为本、和谐、持久、创新、服务为原则，期待与您携手未来，铸就辉煌！

# 20+

20 years experience in casting

# 3.3

With area of 33,000 m<sup>2</sup>

# 90+

More than 90 employees



**SHANDONG XINGHUA CASTING CO., LTD**  
山东兴华铸件有限公司

Factory add: Weizi Industrial Park, Changyi, Weifang City, Shandong Province, China  
中国山东省潍坊市昌邑围子工业园

Tel: +86-156-2169-9255

E-Mail: [annama@xinghuacasting.cn](mailto:annama@xinghuacasting.cn)

Web: [www.volcaniccasting.com](http://www.volcaniccasting.com)



XINGHUA CASTING

# Ductile iron manhole cover.

SHANDONG XINGHUA CASTING CO., LTD

[www.volcaniccasting.com](http://www.volcaniccasting.com)



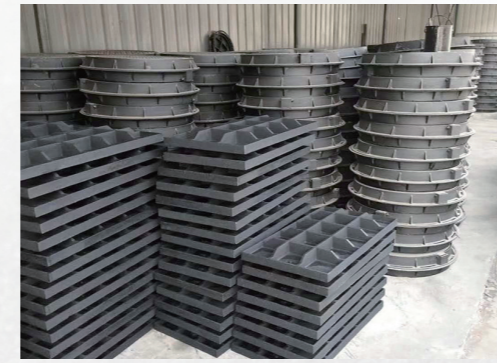
# SHANDONG XINGHUA CASTING CO., LTD

山东兴华铸件有限公司

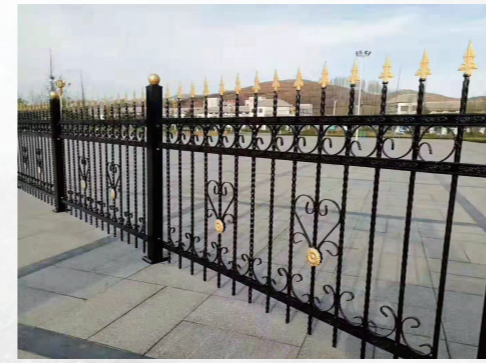
More than 20 years experience  
in casting



## MAIN PRODUCTS 主要产品



Ductile iron manhole cover  
球墨铸铁井盖



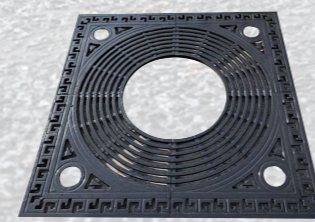
Cast iron guardrail  
铸铁护栏



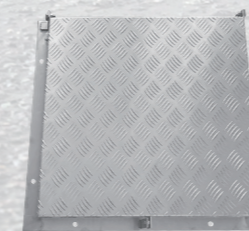
Cast iron parts  
铸铁件



### Ductile iron manhole cover: 球墨铸铁井盖:



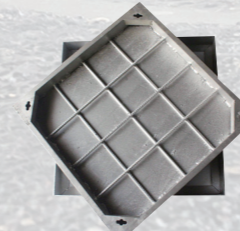
Tree grates  
树池篦子



Aluminum manhole cover  
铝制井盖



Stainless wall plates  
不锈钢盖板



Stainless steel manhole cover  
不锈钢井盖



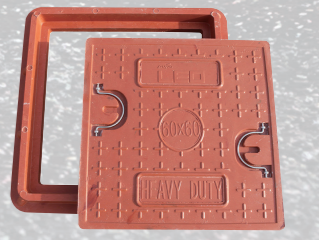
Drainage ditch  
排水沟



Composite drainage grating  
复合排水沟盖板



Ductile iron grate  
球墨铸铁篦子

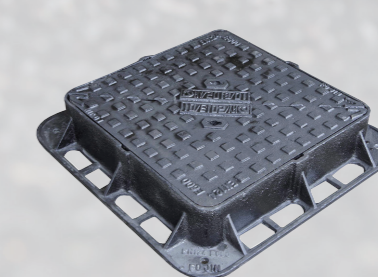
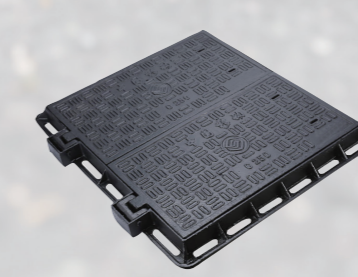


Composite manhole cover  
复合井盖

### Cast Iron Manhole Cover 铸铁井盖



### Rectangular Manhole Cover 矩形井盖



→ Our Plant